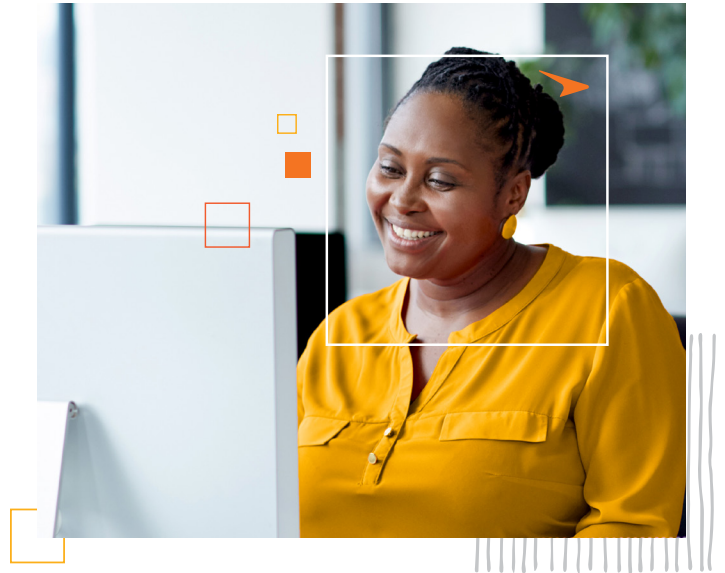


# Paycor's Guide to End of Year Payroll

We know Year End is a busy time, but it doesn't have to be confusing. When thinking about Year End, don't get overwhelmed!

Remember that it all comes down to these 3 steps:

1. Check employee and employer indicative data
2. Check wage, tax, and benefits data
3. Check for special procedures



Sounds easy, but as with many things in life, the devil's in the details.

Don't worry, we'll walk you through everything you need to know, step by step. To help ensure your success, we've created this 2022 Year End Guide.

## Self-Service Links

### BONUS RUNS

Get Help: [Pay Employees Bonus Runs \(Bonus Earning\)](#)

Get Help: [Grossing Up a Bonus Check](#)

### HEALTH SAVINGS ACCOUNTS

Get Help: [Health Savings Account \(HSA\) Employer and Employee Setup](#)

Get Help: [Health Savings Account \(HSA\) Overview](#)

### THIRD PARTY SICK PAY (3PS)

Get Help: [Third Party Sick Pay \(3PS\): Overview](#)

Get Help: [Third Party Sick Pay \(3PS\): Adding Earnings and Deductions](#)

### PERSONAL USE OF AUTO (PAUTO)

Get Help: [Personal Use of a Company Vehicle \(PUCV\)](#)

### DEDUCTION CAPS

Get Help: [Managing Employee Deductions and Deduction Caps](#)

### GROUP TERM LIFE

Get Help: [Group Term Life](#)

### YEAR-END SUPPORT

Get Help: [Year- End FAQ](#)



Have Questions About *Year End?*

Chat with us at: [Support.Paycor.com](https://support.paycor.com) | [855-565-3285](tel:855-565-3285)

